

Loudspeaker Connectors



REAN Loudspeaker Connectors



RLS4FC

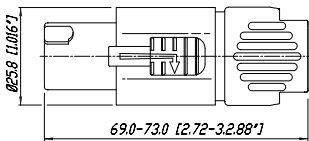


RLS4MP

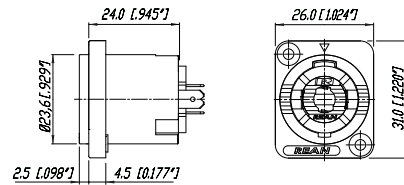
- Glass reinforced materials – rugged connector housing and insert
- Rugged keyway – for reliable mating
- Robust twist lock system – provides secure locking

- Chuck type strain relief – best cable retention, easy to assemble
- Airtight receptacle – “state of the art” for speaker applications

RLS4FC



RLS4MP



Loudspeaker Connectors

Ordering Information

Type No.	Description
----------	-------------

Cable Connector (bulk packed, to be ordered in multiples of 100 pcs.)

RLS4FC-D	4 pole cable connector with latch lock, chuck and bushing
----------	---

Chassis Connector (bulk packed, to be ordered in multiples of 100 pcs.)

RLS4MP-D	4 pole chassis connector, black D-size housing, flat taps
----------	---

Specification

Cable connector
RLS4FC

Chassis connector
RLS4MP

Electrical

Rated current per contact	30 A rms continuous	30 A rms continuous
Contact resistance (after lifetime)	≤ 5 mΩ	≤ 5 mΩ
Insulation resistance (after dampheat)	> 1 GΩ	> 1 GΩ
Dielectric strength (peak)	4 kVdc	4 kVdc
Rated voltage (Insulation)	250 V	250 V
Attention	Shall NOT be used as an AC mains connector!	Shall NOT be used as an AC mains connector!

Mechanical

Lifetime	> 1'000 mating cycles	> 1'000 mating cycles
Cable O.D. range	5–10 mm	–
Wiring	screw type terminals or soldering wire size 12 AWG; 4mm ²	flat tabs for 3/16" (FASTON [®] 4.8 x 0.5 mm) or soldering
Locking device	Quick Lock	Quick Lock
Mounting location	–	front & rear
Chassis shape	–	D

Material

Bushing	PA 6 30% GR	–
Contacts	Brass (CuZn39Pb3)	CuSn6
Contact plating	4 μm AG	4 μm AG
Insert	PBTP 20% GR	–
Locking latch	ZnAl4Cu1	–
Shell	PA 6 30% GR	PA 6 30% GR
Strain relief	POM	–

Environment

Approvals	UL, CSA	–
Flammability	UL 94 HB	UL 94 HB
Solderability	complies with IEC68-2-20	complies with IEC68-2-20
Operating temperature	-30°C to +80°C	-30°C to +80°C