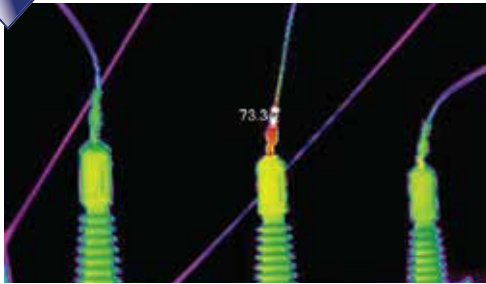
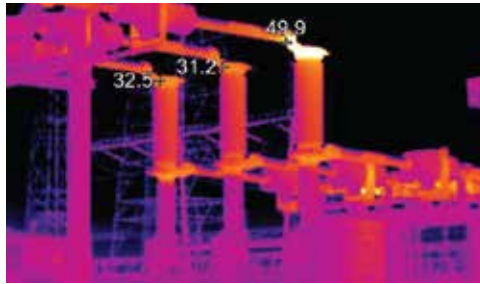


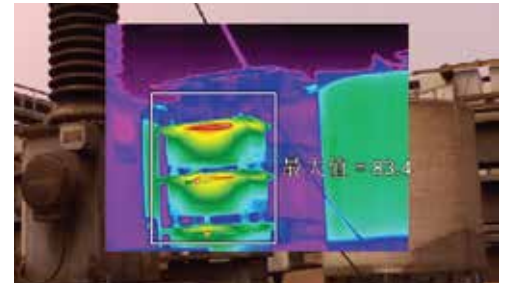
Electrical Equipment Maintenance 電氣設備維護



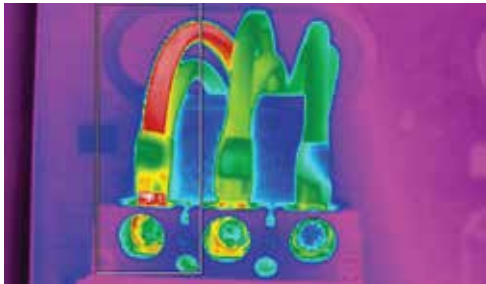
Connector on Phase B of a 3-Phase Transformer was oxidized, causing over heat.
變壓器B相出綫接頭氧化腐蝕過熱



Oil-filled cooling sleeve was blocked
充油套管冷卻循環堵塞



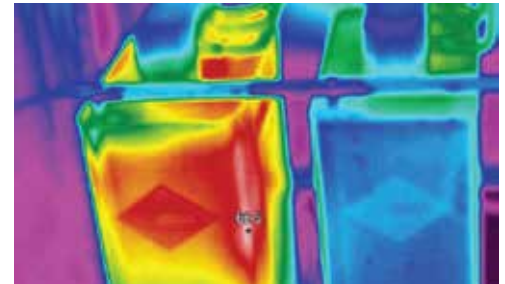
Power Quality problem causing the filter resistor overheat.
電能質量問題引起濾波電阻過熱



3-Phase current unbalance
電氣綫纜過載三相不平衡

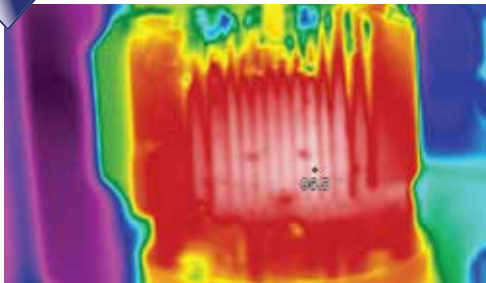


Overheat on power bar caused by unbalanced load.
橋架動力電纜由於負載不匹配導致過熱

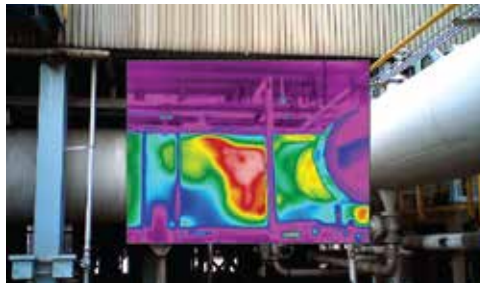


Heat generated on aged capacitor.
電容器老化發熱

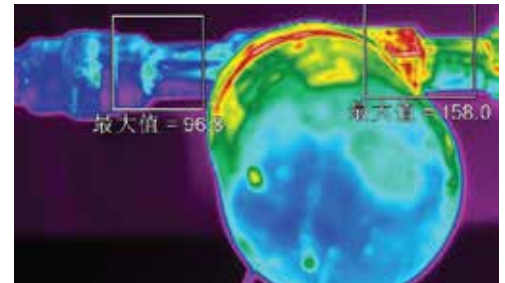
Electrical, Mechanical and Production Equipment Maintenance 機電和生產設備維護



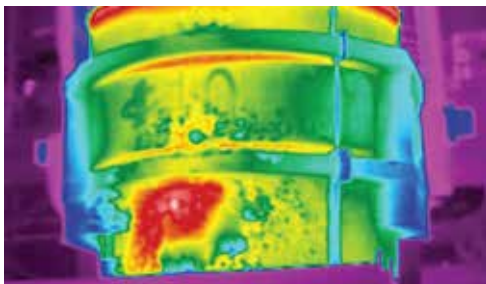
Coil overheat on aged electric motor
老化導致電機內部綫圈發熱



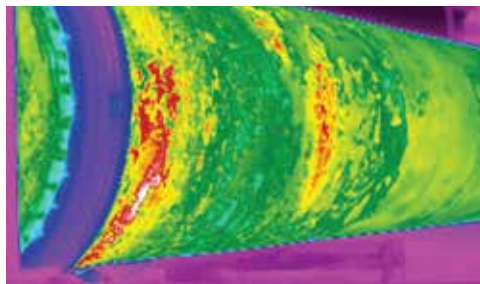
Thinned pipe shows change in temperature.
焦油煤氣管道減薄



The inlet of a Steam Trap is 60°C hotter than the outlet.
疏水閥(凝汽閥)進口端必須高於出口端 60°C以上，方為正常



Insulation breakdown
鋼包耐火磚損壞

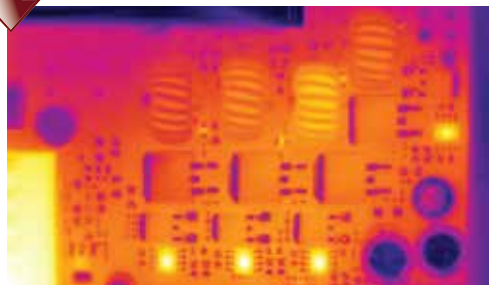


The Insulation of Rotary kiln is breakdown.
轉窯隔熱材料損壞

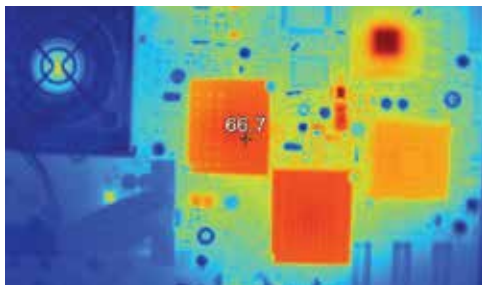


Oil Tank Inspection
對儲罐液位綫進行快速校驗

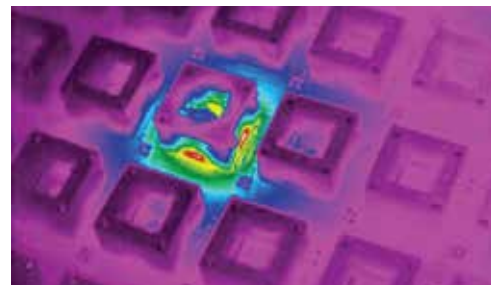
R&D and Quality Control Management 研發與品質管理



Heat distribution studies on PCB
電路板熱分佈，用於改善散熱設計



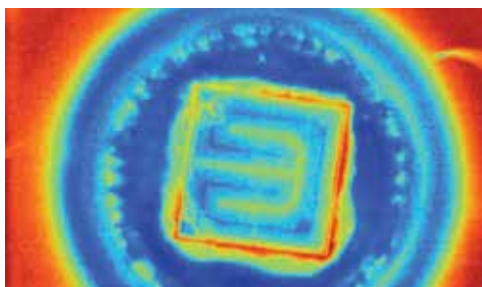
Heat distribution studies on PCB, between various ICs
檢測電路板芯片，協助進行篩選



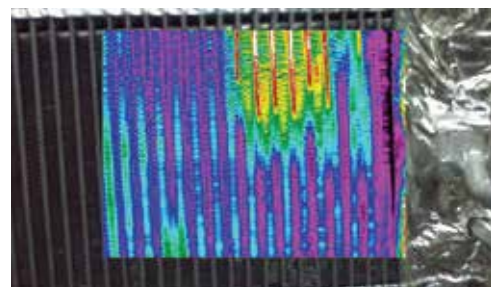
IC aging test. Hot IC is defective.
芯片老化測試，發熱的為有質量問題的芯片



Inspection of the cooling system, exhaust system and transmission system for design improvement.
對發動機的散熱系統、排氣系統、傳動系統進行熱分佈檢測，改善設計

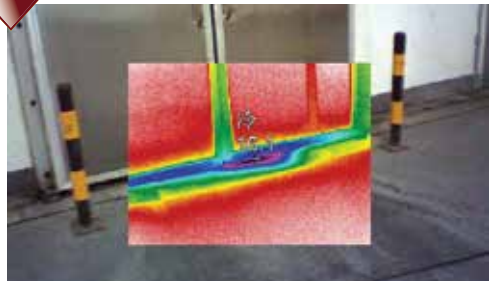


LED chip is 2mm in diameter. Photo taken with optional IR Lens.
2mm的LED芯片，加裝選配鏡頭後可檢測微米級別的小目標

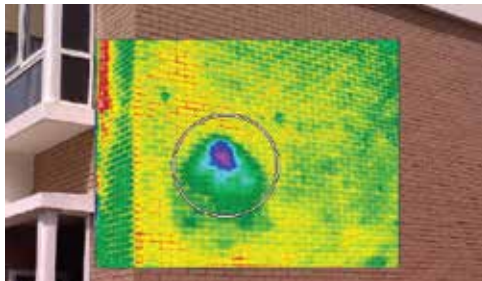


Inspection of car cooling system shows hotspot where cooling is not sufficient.
汽車冷氣散熱檢測，高溫區域為散熱效果不良

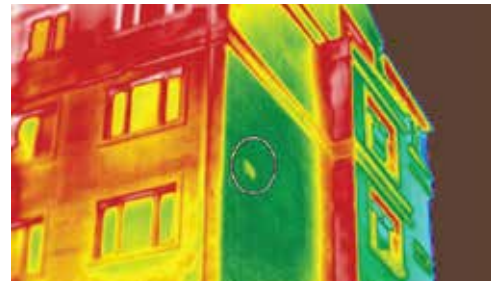
Building Inspection and Maintenance 建築檢測及維護



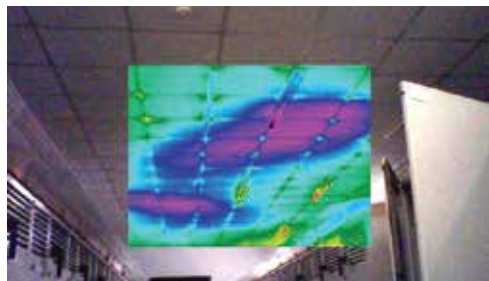
The door of a cold store has leakage, which will lead to energy lost.
冷庫門密封不妥善，導致能量損耗



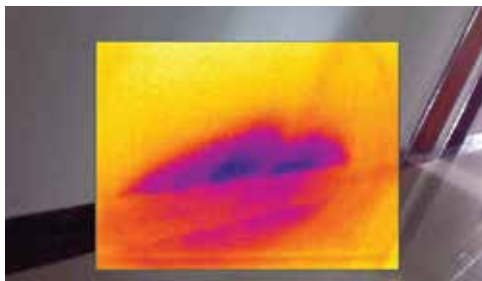
Hidden hole on the wall. This may lead to leakage inside the house after rains.
外牆空鼓，該位置在雨後極易滲水



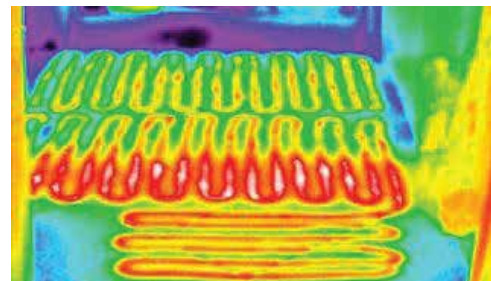
Hidden hole behind tiles. The tiles may fall down causing injuries.
外牆磚牆空鼓，易造成牆磚掉落的傷人事故



Water on the ceiling. This was taken inside a power distribution room. Water drops onto the switch may cause serious problems.
電氣室吊頂滲水，紫色部份為含水區域，若滴水至電氣櫃會引發嚴重事故



Leakage found inside the house
內牆滲漏



Uneven thermal distribution caused by blockage in the hydronic underfloor heating circuit.
地暖的水循環回路堵塞，造成屋內冷熱不均